



ATEX / IECEx

Zone 2 and 22

CSA Class I Division 2



Lumen X4 Quick Start Guide

4.3" Industry Mobile Computer

Type B7-A2P4-.... /

Quick Start Guide - Translation

Lumen X4

4.3" Industry Mobile Computer

Type B7-A2P4-..../.....

ATEX/IECEX Zone 2/22
CSA Class I Division 2

Document No.: B1-A2P4-7E0002 / 401724
Revision 0 / Status: 6 June 2016

Proviso: Subject to technical changes.
Changes, mistakes and printing errors do not
substantiate any claim to damages.

Content	Page
English	1-12

BARTEC GmbH
Max-Eyth-Straße 16
97980 Bad Mergentheim
Germany

Phone: +49 7931 597-0
Fax: +49 7931 597-119

Contact:
Service-mobilecomputing@bartec.de
Download: www.bartec.de

1. Basic Information

Read carefully before putting the devices into operation.



The Quick Start Guide is a fixed part of the product. It must be kept in the direct vicinity of the device and the installation, operating and service staff must have access to it at all times.

More detailed instructions of the use can be found at www.bartec.de as well as the current versions of the datasheets, user manual, certificates and EU declaration conformity or may be requested directly from BARTEC GmbH.

Knowledge of the safety and warning information and the strict compliance with it is essential for safety installation and use. Atries and material damage can be avoided by circumspect handling and systematically following the instructions.

The BARTEC company reserves the right to carry out technical changes at any time.

Maintanance and Repairs The pertinent erection and operating provisions for electrical systems must be observed! Repairs to explosion-protected devices may only be performed by authorised personnel with original spare parts and according to the state of the art. The applicable provisions must be observed in this respect.

Inspections According to EN/IEC 60079-17 and EN/IEC 60079-19, the operator of electrical systems in potentially explosive atmospheres is obliged to have these inspected by an electrician to ensure correct condition.

Warranty If non-specified components are used, the explosion protection will no longer be guaranteed. In the case of externally procured parts, it is not guaranteed that these have been designed and manufactured in accordance with their load and requisite safety.

Disposal As professional electrical devices, our devices are intended exclusively for commercial use, so-called B2B devices, in accordance with the WEEE Directive. Observe the national waste disposal regulations when disposing of the devices. All products purchased from us can be returned to us by our customers for disposal. The sender shall bear the costs of postage and packaging.

Safety and warning information is particularly emphasised in this Quick Start Guide marked by symbols.



DANGER describes a directly imminent danger in hazardous areas. If not avoided, death or severe injury will be the consequence.

2. Scope of delivery

- 1 x 4.3" ex-certified Lumen X4 Industry Mobile Computer
- 1 x Replaceable Li-Polymer battery
- 1 x Hand strap
- 1 x USB power adapter with EU plug
- 1 x USB power adapter with US plug
- 1 x USB cable (Type A to micro Type B)
- 1 x Quick Start Guide

3. Getting started

In order to start using the Lumen X4 Mobile Computer for the first time:

- ▶ Install the battery
- ▶ Charge the battery
- ▶ Start the Lumen X4
- ▶ Install SIM/Micro SD Card.

4. Marking, test certificate, and standards

Note: Full information in "user manual"

<u>ATEX Zone 2 and 22</u> ⊕ II 3G Ex ic IIC T5 Gc ⊕ II 3D Ex ic IIIB T100°C Dc IP54 -20 °C ≤ Ta ≤ +50 °C	EPS 16 ATEX 1 039X
<u>IECEX Zone 2 and Zone 22</u> Ex ic IIC T5 Gc Ex ic IIIB T100°C Dc IP54 -20 °C ≤ Ta ≤ +50 °C	IECEX EPS 16.0016X
<u>CSA Class I Division 2</u> Class I Div. 2 Groups A, B, C and D T5	CSA Certificate: 70043322

X - marking (special conditions of use for secure operation within the potentially explosive atmosphere)

- ▶ The ambient temperature range is -20 °C to +50 °C.
- ▶ The device must be protected from impact with high impact energy, from intense UV-irradiation, and strongly charge generating processes.
- ▶ It is not allowed to use connectors inside the potentially explosive atmosphere.
- ▶ It is not allowed to remove, change and/or charge the battery inside the potentially explosive atmosphere.

Warnings

The warnings on the product and on the battery must always be observed!

Additional safety instructions for use in potentially explosive atmospheres, see user manual.

5. Your Lumen X4

Some tips for using and caring the Lumen X4

Your Lumen X4 Mobile Computer series is designed to resist damages from certain rugged conditions. However, to help care for your Lumen X4, please avoid prolonged or extreme exposure to those conditions.

- ▶ To ensure the rugged design works and protects your Mobile Computer, please be sure the connector cover is closed and the back cover is screwed properly.
- ▶ Don't leave your Mobile Computer near a heat source; this can damage the device.
- ▶ Avoid dropping your Mobile Computer on a hard surface; this can potentially cause damage to the device.
- ▶ To clean your Mobile Computer, use a dry soft cloth. Don't use alcohol or other cleaning solutions.
- ▶ Please don't bring your Mobile Computer in contact with water when the connector cover is opened. The water-proof design works only when the outer case is sealed properly.
- ▶ Note: Certain apps and features may not be available in all countries.
- ▶ The external interfaces "Micro USB Type B (OTG Host, data exchange and charging), Pogo Pin (charging in docking station)" may only be used outside the potentially explosive range with accessories specified by the manufacturer.

Note: Detailed functionality illustration in the user manual.

6. Starting the Lumen X4

Before using the Lumen X4, install the Li-Polymer battery by sliding the battery into the Lumen X4.

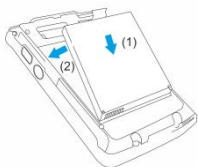




7. Installing the Battery



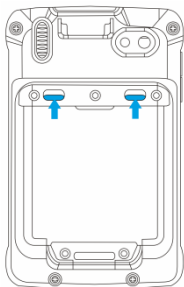
Only charge, install or replace the battery outside the potentially explosive atmosphere.



(1) Reinsert the battery by latching the bottom first.

(2) Push it down.

(3) Check the locking of the battery latches. The slides of the battery latches must maintain the position in the drawing (see arrows)



8. Charge the Battery

With USB charging cable

The battery in the new Lumen X4 is not charged yet. For the first time using, we recommend you charge with the AC adapter (Charging from PC's USB port will take 6 hours or longer). Use the bundled AC adapter and USB cable to charge the Mobile Computer for 4hrs until the LED indicator turns solid green.



Do not replace or charge the battery in a potentially explosive atmosphere.

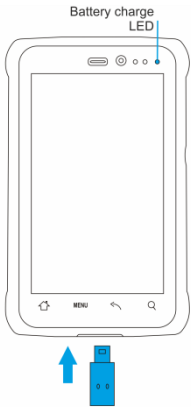
Only use original accessories from BARTEC.

Our warranty does not cover damage to the Lumen X4 caused by other batteries and/or chargers.

Additional safety instructions for use in potentially explosive atmospheres, see user manual.

Note: The actual life of a battery is influenced by different factors, e.g. hot, cold, rough operating environment and falling from a great height. Batteries kept for a duration of six months or longer should be charged and discharged again at least every three months.

Please don't remove the battery pack or try to take the Mobile Computer apart while the Lumen X4 is charging. These actions will result in some damages and may invalidate your warranty.



- (1) Connect the power supply output connector to the input power port on the USB charging cable.
- (2) Open the connector cover and connect the USB charging cable to the bottom of the Industry Mobile Computer.
The battery charge LED indicates the battery charging status.

LED Status	Description
Off	The Industry Mobile Computer is not charging or not properly connected
Solid red	Low battery
Solid orange	Charging in progress
Solid green	Charging complete

9. Turn on/Turn off your Lumen X4

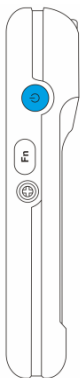


Unintended use endangers explosion protection. Risk of fatal injury in an explosive atmosphere!

In the case of functional disturbances or damage to the enclosure, the device should be turned off and removed immediately from the potentially explosive atmosphere to a safe place. Remove battery to decommission the device!

The ambient temperature range of use for secure operation within the potentially explosive atmosphere is -20 °C to +50 °C.

Additional safety instructions for use in potentially explosive atmospheres, see user manual.



Turn on:

- (1) Press and hold the Power On/Off button for 3 seconds, located on the right side of the device.
- (2) When the device vibrates, release the Power On/Off button. The desktop screen is displayed.

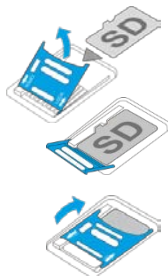
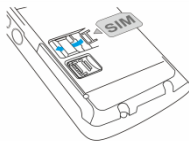
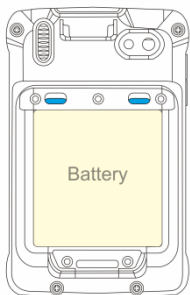
Turn off:

- (1) To turn off the device, press and hold the Power On/Off button until the phone options menu appears.
- (2) Tap **Power off**.

10. How to Insert SIM / Micro SD Card



Only insert or replace the SIM/Micro SD card outside of the potentially explosive atmosphere. Only use micro SD cards which have been tested and certified by BARTEC for this purpose.



- (1) Turn Off the Lumen X4.
- (2) Make sure the Lumen X4 is powered off and the USB cable is unconnected before you remove the back cover.
- (3) Place the Lumen X4 on its front (display facing down-wards) on a flat mat.
- (4) Press the two latches up.
- (5) Remove the battery.
- (6) Insert the SIM card in the SIM card slot (with the gold contacts facing downwards and cut-off corner facing out) in the direction of the arrow.
- (7) Push the micro SD card holder in the direction of the arrow to unlock it.
- (8) Pull the micro SD card holder upwards and bring it in a vertical position.
- (9) Put the micro SD card into the slot.
- (10) Close the SD card holder and push it into lock position until there is a click.

EU Declaration of Conformity

EU Konformitätserklärung
EU Declaration of Conformity
Déclaration UE de conformité

BARTEC

BARTEC GmbH
Max-Eyth-Straße 16
97980 Bad Mergentheim
Germany

Nº B1-A2P4-7C0001

Wir	We	Nous
BARTEC GmbH,		
erklären in alleiniger Verantwortung, dass das Produkt	declare under our sole responsibility that the product	attestons sous notre seule responsabilité que le produit
Mobile Computer Lumen X4	Mobile Computer Lumen X4	Mobile Computer Lumen X4
B7-A2P4-2**2/1121****		
auf das sich diese Erklärung bezieht den Anforderungen der folgenden Richtlinien (RL) entspricht	to which this declaration relates is in accordance with the provision of the following directives (D)	se référant à cette attestation correspond aux dispositions des directives (D) suivantes
ATEX-Richtlinie 2014/34/EU	ATEX-Directive 2014/34/EU	ATEX-Directive 2014/34/UE
EMV-Richtlinie 2014/30/EU	EMC-Directive 2014/30/EU	CEM-Directive 2014/30/UE
RED-Richtlinie 2014/53/EU	RED-Directive 2014/53/EU	RED-Directive 2014/53/UE
RoHS-Richtlinie 2011/65/EU	RoHS-Directive 2011/65/EU	RoHS-Directive 2011/65/UE
und mit folgenden Normen oder normativen Dokumenten übereinstimmt	and is in conformity with the following standards or other normative documents	et est conforme aux normes ou documents normatifs ci-dessous
EN 60079-0:2012 + A11:2013 EN 60079-11:2012 EN 62368-1 :2016 EN55024: 2010 IEC61000-4-2: 2009 IEC61000-4-3: 2006+A1: 2007+A2: 2010 IEC61000-4-4: 2012 IEC61000-4-5: 2014 IEC61000-4-6: 2014 IEC61000-4-8: 2010	IEC61000-4-11: 2004 EN 55022: 2010/AC: 2011 EN61000-3-2: 2014 EN61000-3-3: 2013 EN 300 328 V1.9.1: 2015 EN 300 440-1 V1.6.1: 2010 EN 300 440-2 V1.4.1: 2010 EN 301 908-1 V6.2.1: 2013 EN 301 908-2 V6.2.1: 2013 EN 301 489-1 V1.9.2: 2011 EN 301 489-3 V1.6.1: 2013 EN 301 489-17 V2.2.1: 2012 EN 301 489-24 V1.5.1: 2010	

EU Konformitätserklärung
EU Declaration of Conformity
Déclaration UE de conformité

BARTEC

BARTEC GmbH
Max-Eyth-Straße 16
97980 Bad Mergentheim
Germany

N^o B1-A2P4-7C0001

Kennzeichnung	Marking	Marquage
 II 3G	Ex ic IIC T5 Gc	
 II 3 D	Ex ic IIIB T100°C Dc IP54 -20°C to +50°C	
Verfahren der internen Fertigungskontrolle	Procedure of internal control of production	Procédure de contrôle interne de fabrication
EPS 16 ATEX 1 039 X		
2004, Bureau Veritas Germany GmbH, 86842 Türkheim		
If the sign "X" is placed after the declaration of conformity number, it indicates that the equipment is subject to special conditions for safe use specified in the user manual.		
		
Bad Mergentheim, den 27.07.2016		
 i.V. Nader Halmuschi BU Leiter ACS	 i.V. Michael Schulte Leiter GW PZ	

BARTEC

Your partner
for safety
technology.

Challenge us!

EN_B1-A2P4-7E0002-06/2016-Automation-401724

BARTEC GmbH
Max-Eyth-Str. 16
97980 Bad Mergentheim
Germany

Phone: +49 7931 597-0
Fax: +49 7931 597-119
info@bartec.de
www.bartec.de