

## FAQ - Frequently Asked Questions

### Bluetooth hand-held scanner BCS3678<sup>ex</sup>

#### Base station read out MAC address

- Possible reason
- Possible solution

#### Relevant for

- BCS3678<sup>ex</sup>-IS and base station
- BCS3678<sup>ex</sup>-NI and base station

Status: May 2021

**Reservation:** Technical data subject to change without notice. Changes, errors and misprints may not be used as a basis for any claim for damages.



- 1. Information of this FAQ ..... 2
  - 1.1 Reference documents ..... 2
- 2. Possible reason ..... 4
- 3. Required software..... 4
- 4. How to read out the MAC address..... 6
  - 4.1 How to read out the MAC address ..... 6

# 1. Information of this FAQ



## Read carefully before commissioning the device.

The FAQ is an additional description to the available user manual and part of the device. The FAQ is directed at all persons who are entrusted with handling the device. Knowledge of the safety instructions and warnings in this FAQ and strict compliance with them is essential for safe handling.

- Carefully read the FAQ and especially the safety instructions before using the device.
- Make the FAQ accessible to all people who are entrusted with handling the device.

Warnings are used in this User Manual to warn of the risks of damage to property and personal injuries.

Symbol	Explanation
	Important advice and information for the effective, efficient and environmentally sound use of the product.
✓	Condition that must be met before the subsequent actions can be performed.
▶	Individual steps you must take.
1., 2., ...	Various steps to be performed in the order specified.
↪	Indication of the results of a step or of several steps for monitoring success.

## 1.1 Reference documents



All documents are available online from the following websites:

- BARTEC: [www.bartec.com](http://www.bartec.com) or <http://automation.bartec.de>

Document BARTEC	Explanation
BARTEC user manual of: <ul style="list-style-type: none"> <li>• BCS3608<sup>ex</sup></li> <li>• BCS3678<sup>ex</sup></li> </ul>	<u>It contains:</u> <ul style="list-style-type: none"> <li>• All essential information for the user to make full use of the device. This manual includes a description of the system functions and capabilities, contingencies and modes of operation, and step-by-step procedures for system access and use.</li> <li>• Guidelines on commissioning and the safe use of hand-held scanners (including installation, safety information related to explosion protection and information regarding programming)</li> </ul>

Document BARTEC	Explanation
Zebra user manual of: <ul style="list-style-type: none"><li>• DS3608</li><li>• DS3678</li></ul>	<u>It contains:</u> <ul style="list-style-type: none"><li>• Programming instruction</li><li>• Programming barcodes</li><li>• General information of usage</li></ul>

## 2. Possible reason

A possible reason for reading the MAC address can be the loss of the type label (with MAC address) and the pairing barcode.

## 3. Required software

It is possible to read out the MAC address of the base station by using two Zebra tools.

### 1. Zebra 123 Scan utility

Download and install:

<https://www.zebra.com/us/en/support-downloads/software/utilities/123scan-utility.html>

Download and install the latest version of 123 Scan utility.

Example screenshot for version v5.03.0014:

#### 123SCAN UTILITY FOR WINDOWS SUPPORT

123Scan is an easy-to-use, PC-based software tool that enables the quick and easy set-up of Zebra scanners. With over 600,000 users worldwide, this is the single utility you will need to setup your Zebra scanner.

For more information, please see:

[123Scan Product Page](#)

#### - 123SCAN UTILITY FOR WINDOWS 7, 8, 8.1, 10 (32 AND 64BIT)

[Collapse Versions](#)

##### VERSIONS

- 5.03.0014

Release Date: April 2021

##### Device Compatibility

Please scroll down for device compatibility

##### Documentation

**123Scan Scanner Configuration Utility Release Notes**

[Download 465 KB](#)

##### Software

**Zebra\_123Scan\_(32bit)\_v5.03.0014.exe**

123Scan for Windows 32bit

[Download 490 MB](#)

**Zebra\_123Scan\_(64bit)\_v5.03.0014.exe**

123Scan for Windows 64bit

[Download 498 MB](#)

## 2. Zebra scanner SDK for Windows

Download and install:

<https://www.zebra.com/us/en/support-downloads/software/developer-tools/scanner-sdk-for-windows.html>

Download and install the latest version of the Zebra Scanner SDK for Windows.

Example screenshot:

### SCANNER SDK FOR WINDOWS

The Zebra Scanner Software Developer Kit (SDK) for Windows defines an architectural framework providing a single programming interface across multiple programming languages (such as MS .NET, C++, Java) for all scanners communication variants (such as IBMHID, SNAPI, HIDKB, Nixdorf Mode B, etc.).

For more information, please see:

[Zebra Developer Portal >](#)

The Zebra Scanner SDK includes a suite of components that provides a unified software development framework with a wide range of functions for interfacing Zebra Scanners to user applications and solutions.

### HOW-TO VIDEOS

Multi-Scanner / Multi-App Implementat



1 Minute Tour



Installation And Validation



Programming Basics

### - SCANNER SDK FOR WINDOWS 7, 8, 8.1, 10 (32 AND 64 BIT)

[Collapse Versions](#)

#### INSTALLATION REQUIREMENTS

##### External Dependencies:

C# .Net Sample Applications require .NET framework be available on the target computer.  
JPOS requires JRE/JDK 1.6 or above to be available on the target computer.

Installation of a new release replaces previous versions of Zebra Scanner SDK and common components.

Microsoft .Net framework and/or Java JDK/JRE, will not be installed with this installation package. Users are advised to install both the components independently.

#### VERSIONS

- 3.06.0006

Release Date: **April 2021**

##### Device Compatibility

This software has been approved for use with the following devices:

- CS6080	- DS6878-HC	- LS9208i General Purpose Bar Code Scanner
- DS3408 Handheld Scanner	- DS6878-SR Cordless Bluetooth 2D Imager	- MP6000 Scanner Scale
- DS3608-DP DS3678-DP Ultra Rugged Scanners	- DS9208 Omnidirectional Hands-Free Presentation Imager	- MP7000 Multi-Plane Scanner
- DS3608-ER DS3678-ER Ultra Rugged Scanner	- DS9308	- RFD8500 RFID Reader
		- RS5100

##### Documentation

#### Release Notes for Barcode Scanner SDK for Windows

[Download 301 KB](#)

##### Software

#### LoggingAgent\_for\_Windows\_v1.0.4.0.zip

Logging Agent for Windows 32bit and 64bit

[Download 161 KB](#)

#### Zebra\_CoreScanner\_Driver\_(32bit)\_v3.07.0004.zip

CoreScanner Driver for Windows 32bit

[Download 20 MB](#)

#### Zebra\_CoreScanner\_Driver\_(64bit)\_v3.07.0004.zip

CoreScanner Driver for Windows 64bit

[Download 26 MB](#)

#### Zebra\_Scanner\_SDK\_(32bit)\_v3.06.0006.exe

Scanner SDK for Windows 32bit

[Download 48 MB](#)

#### Zebra\_Scanner\_SDK\_(64bit)\_v3.06.0006.exe

Scanner SDK for Windows 64bit

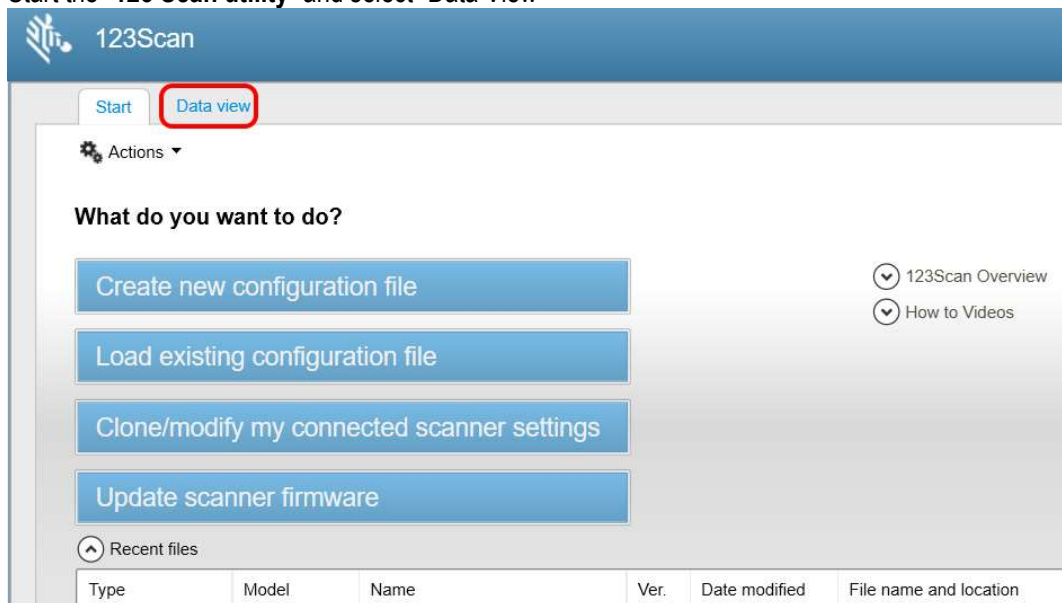
[Download 69 MB](#)

## 4. How to read out the MAC address

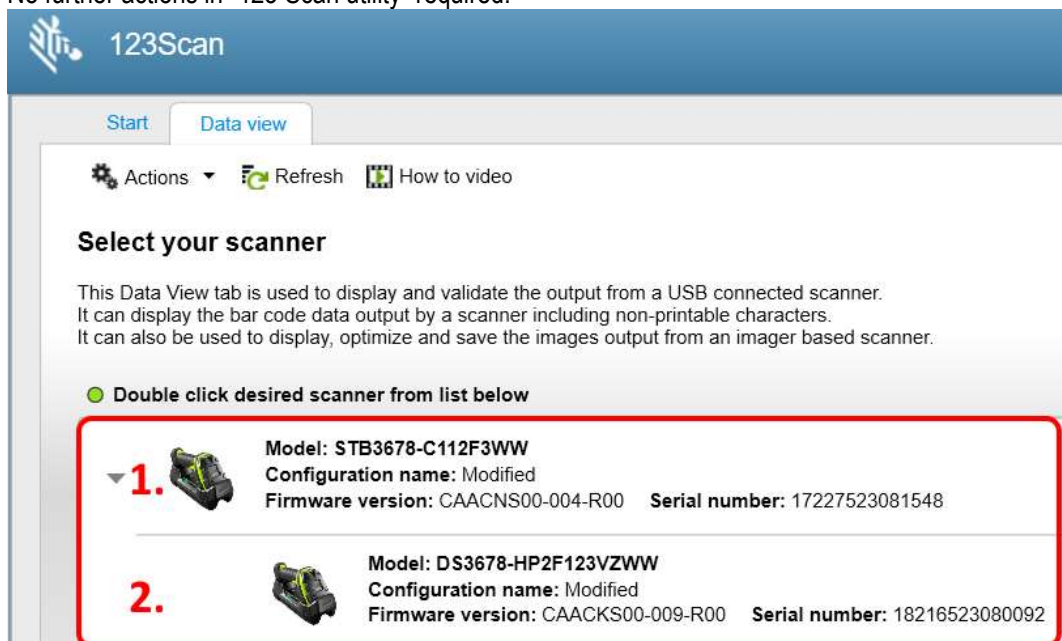
### 4.1 How to read out the MAC address

1. Connect the base station with a USB cable to a Windows PC.
2. Pair a BCS3678<sup>ex</sup> scanner with a base station.

Start the “123 Scan utility” and select “Data View”



3. Check in the “Data View” menu that a base station and a scanner are visible.  
No further actions in “123 Scan utility” required.





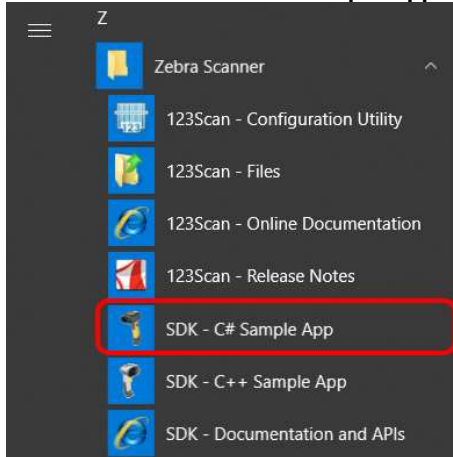
- 1. = STB3678-C112F3WW is the connected base station.
- 2. = DS3678-... shows the connected BCS3678<sup>ex</sup> scanner.

**ATTENTION**

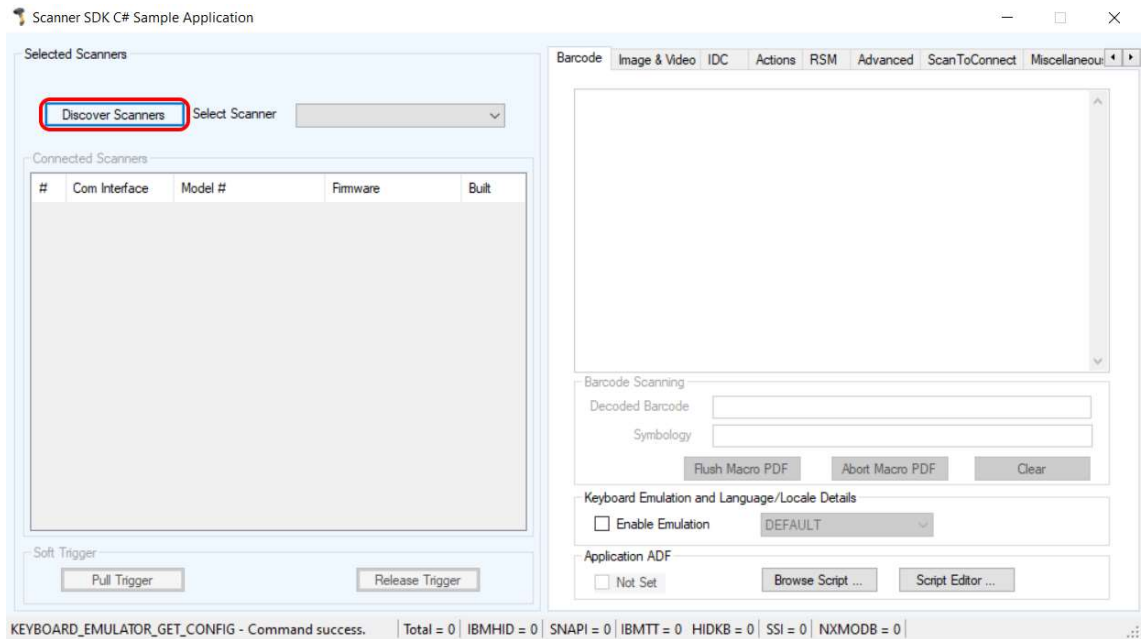
Do not close the “123 Scan Utility”.

Both applications must run in parallel. Otherwise, The “SDK – C# Sample App” is not able to read out the MAC address.

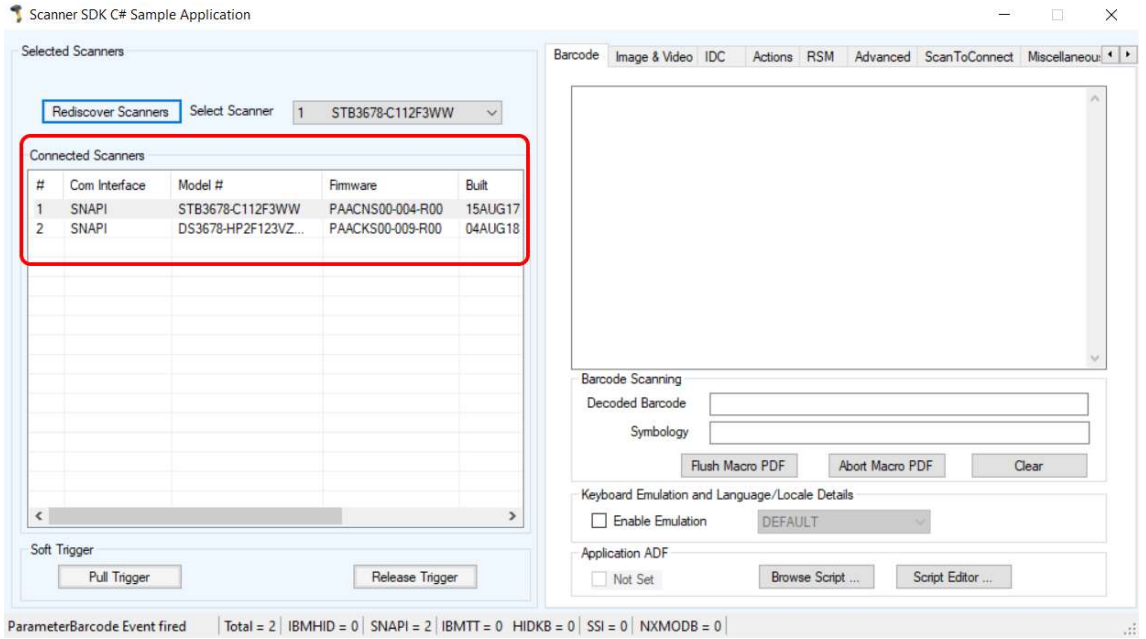
4. Start the Zebra “SDK – C# Sample App” from Windows start menu.



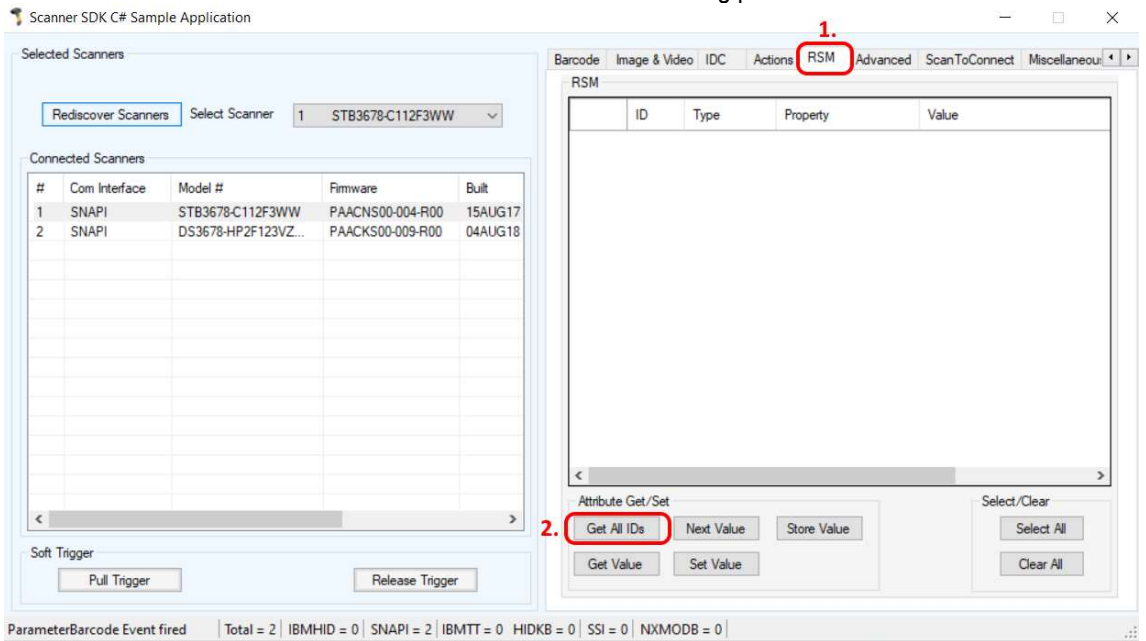
5. Select “Discover Scanners” button.



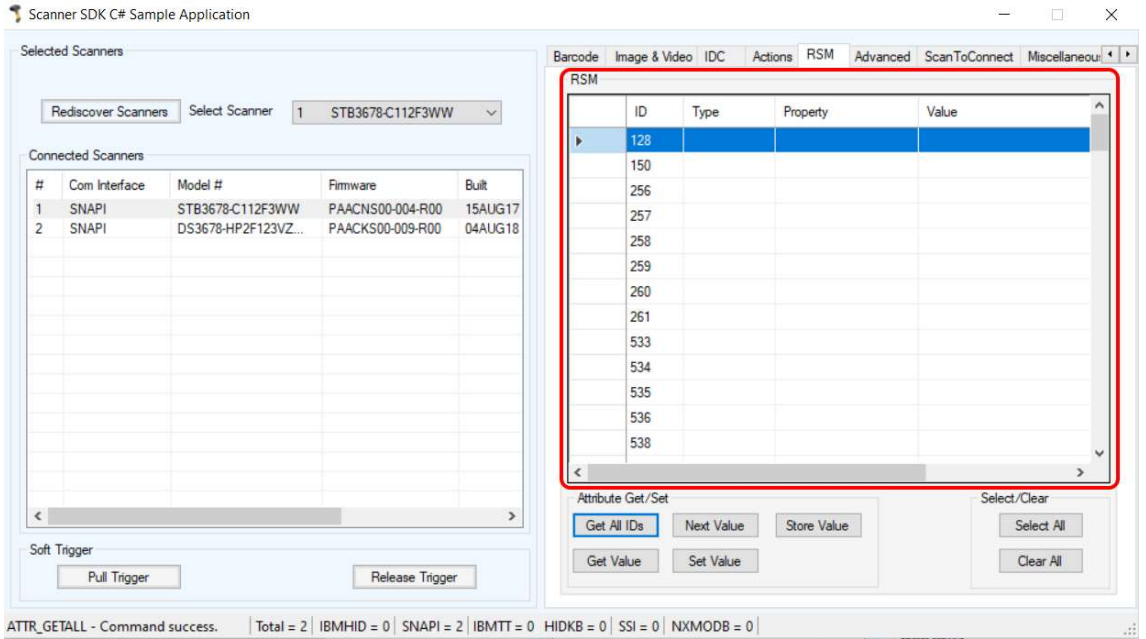
- 6. A list of the connected equipment is listed in the “**Connected Scanners**” field.
  - STB3678-C112F3WW is the connected base station.
  - DS3678-... = shows the connected BCS3678<sup>ex</sup> scanner.



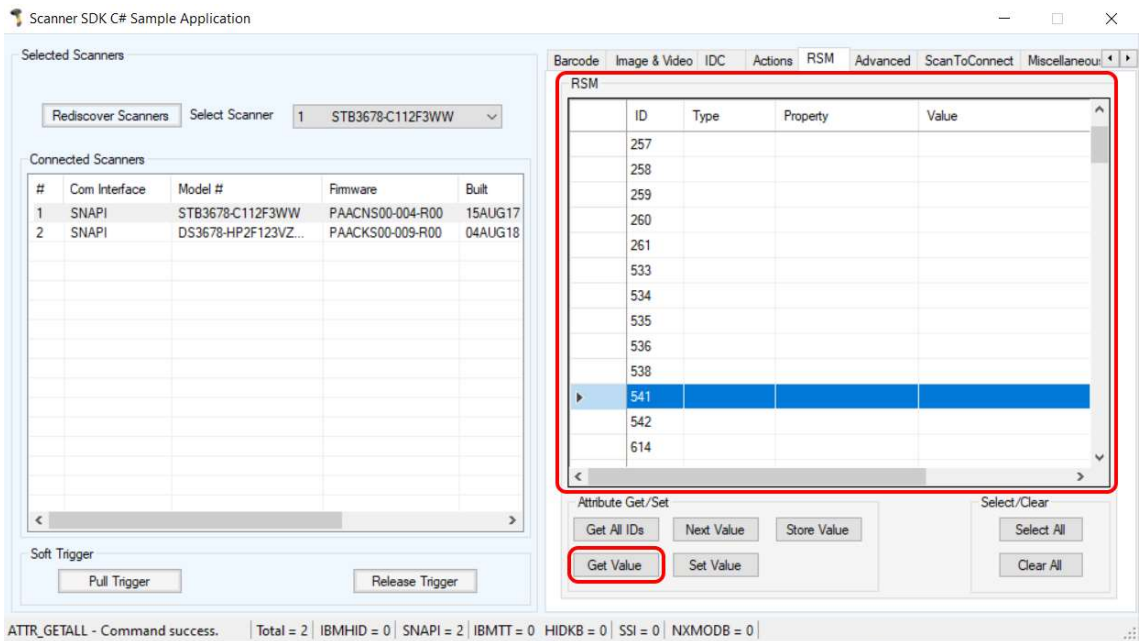
- 7. Select “**1. RSM**” and then “**2. Get All IDs**” as marked in the following picture.



- You will see in the RSM table a list of all device IDs of the connected equipment.

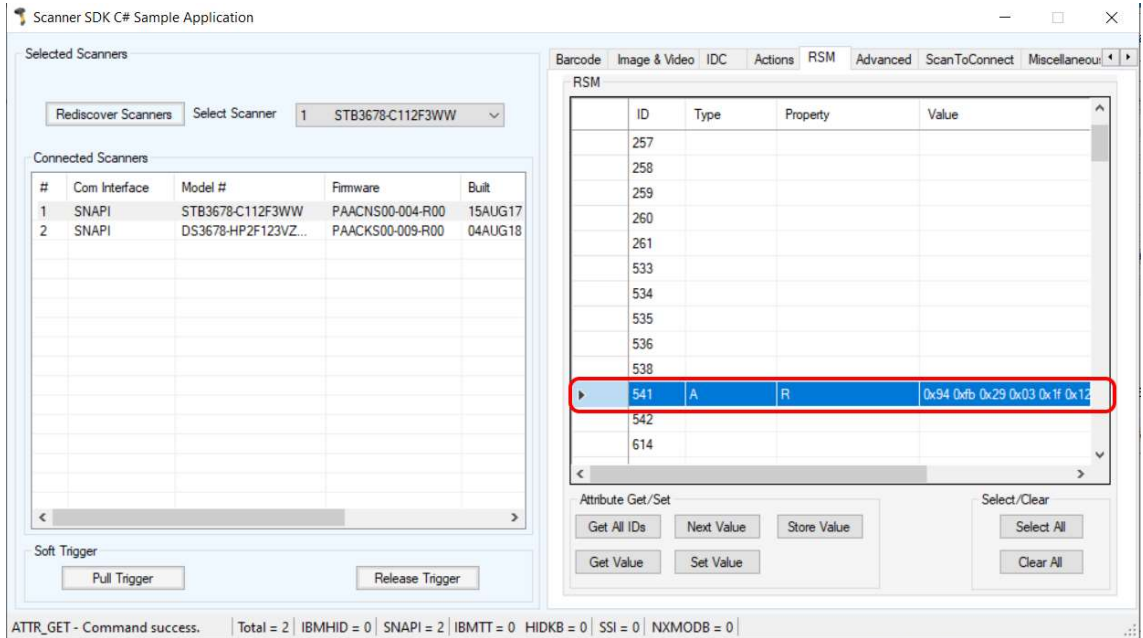


- Scroll down in the list and select the ID with number 541. Then select the button "Get Value".



10. The MAC address of the base station is written in the column “Value”.

0x94 0xfb 0x29 0x03 0x1f 0x12	MAC address in this example is <b>94 FB 29 03 1F 12</b>
-------------------------------	---



11. How to create and print a new pairing barcode is described in BARTEC user manual of the BCS36x8<sup>ex</sup> scanner series.

It is available on BARTEC download page.

<https://automation.bartec.de/scannerE.htm>