

Installation instruction - Translation

Agile S NI / Agile S

10.1" Tablet PC

Installation of the Windows 10 IoT Enterprise operating system (BARTEC version)

- General information
- Notes for installation
- Installation of the operating system

Document-No.: B1-A2B0-7N0001

Status: May 2024

Reservation: Technical data subject to change without notice. Changes, errors and misprints may not be used as a basis for any claim for damages.

1	Basic safety information	2
1.1	Information on this Installation instruction	2
1.2	Co-applicable documents	2
2	Notes for installation	3
2.1	Requirements	3
3	Installation of the operating system.....	4
3.1	Installation with Standard non-Ex USB stick.....	4

1 Basic safety information

1.1 Information on this Installation instruction



Read carefully before commissioning the device.

The Installation instruction is an additional description of the available user manual and part of the device.

The Installation instruction is directed at all persons who are entrusted with handling the device. Knowledge of the safety manuals and warnings in this installation manual and strict compliance with them is essential for safe handling.

- Carefully read the installation manual and especially the safety manuals before using the device.
- Make the installation manual accessible to all people who are entrusted with handling the device.

Safety and warning information is particularly emphasised in this Installation instruction and marked by symbols.

ATTENTION

ATTENTION describes a possibly damaging situation. If not avoided, the plant or objects in its vicinity may be damaged.



Important information on effective, economical & environmentally compliant handling.

1.2 Co-applicable documents



All documents are available online from the following websites:

www.bartec.com or <http://automation.bartec.de/mobileE.htm>

Document	Explanation
Quick Start Guide Tablet PC Agile S NI Tablet PC Agile S	This Quick Start Guide describes the safety-related information, first use and further data of the Tablet PC.

2 Notes for installation

ATTENTION

Property damage through interrupted power supply!

- ▶ Verify that Tablet PC is running on AC power during the entire update process. Do not unplug the AC adapter or any other connected external devices during the update process.
- ▶ Do not perform any actions on the Tablet PC during the installation that could interrupt the installation process. Do not restart or turn off the Tablet PC during the installation as it may cause permanent damage to the Tablet PC.

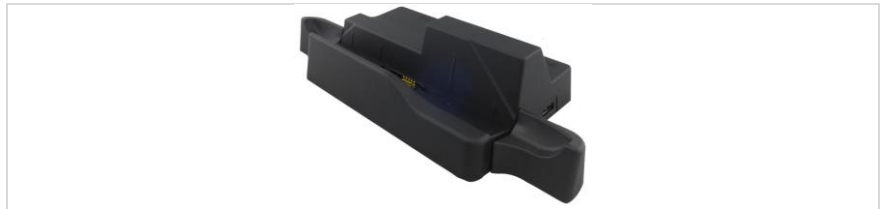
The instructions in this Installation instruction are valid for following devices and operating system version

Device	Agile S NI - Type: B7-A2B* - ****/***** Agile S - Type: G7-A0B* - ****/*****
Operating system	Windows 10 IoT Enterprise LTSC
Operating system version	Version 2021 - Build 21H2
Operating system name BARTEC	SNILTSC21R02
Build number BARTEC	114

2.1 Requirements

Requirements for the Agile S NI / Agile S series to install the operating system:

1. Tablet-PC Agile S NI / Agile S
2. Docking Station 03-9914-0017 for Tablet PC Agile S NI / Agile S (recommended)



or Docking Station 03-9914-0022 for Tablet PC series Agile



3. Power supply 03-9911-0040
4. AC power cable
5. USB stick with operating system

Standard non-Ex USB stick (8 GB or higher)

Attention:

A standard non-Ex USB stick can be used on the USB port of the Agile S / S NI and also in the USB port of the docking station.

3 Installation of the operating system

This installation of the Windows 10 IoT Enterprise operating system can be process with a standard non-Ex USB stick.

Note:



First you need to prepare a bootable installation USB stick with the required BARTEC operating system image.

Manual for preparation is available as separate manual on BARTEC download page:

<https://automation.bartec.de/tabletpcE.htm>

- Select the device.
- Go to register card "Tools".

3.1 Installation with Standard non-Ex USB stick

1. Insert the Tablet PC in the docking station and connect the power supply.



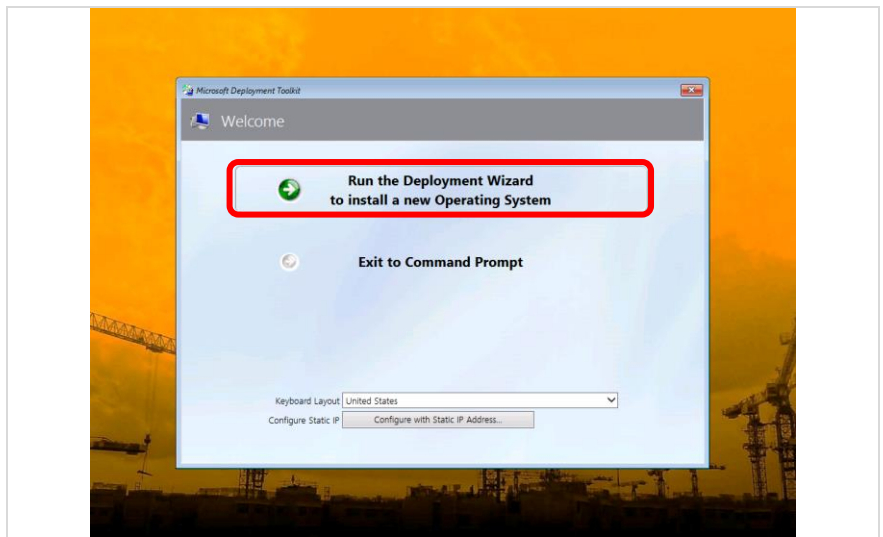
2. Plug the standard non-Ex USB stick with the operating system into a USB port of the docking station.



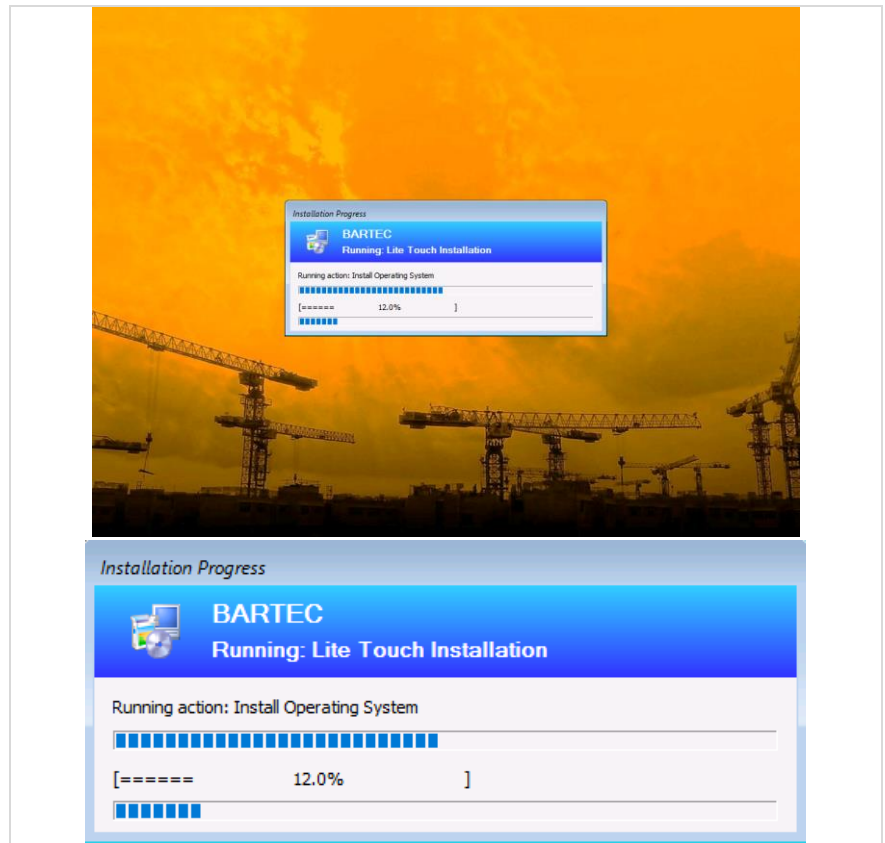
3. Press the Power button, to boot the Tablet-PC.



4. The Microsoft Deployment Kit starts automatically.
Click "Run the Deployment Wizard to install a new Operating System" to start the installation.



5. The Installation Progress starts.
The installation of the OS needs approx. 10-15 minutes.



6. After the installation has finished, the Tablet-PC turned off automatically.
7. Remove the USB stick from the docking station.
8. Start the Tablet-PC.
After startup, the standard Microsoft setup screen appears for the initial setup of the device.

